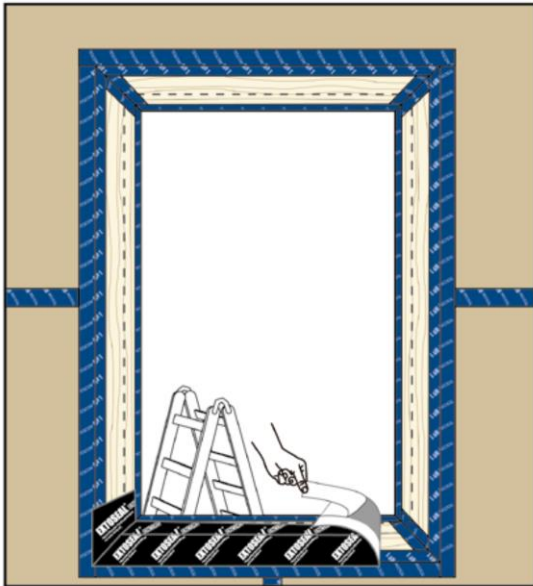
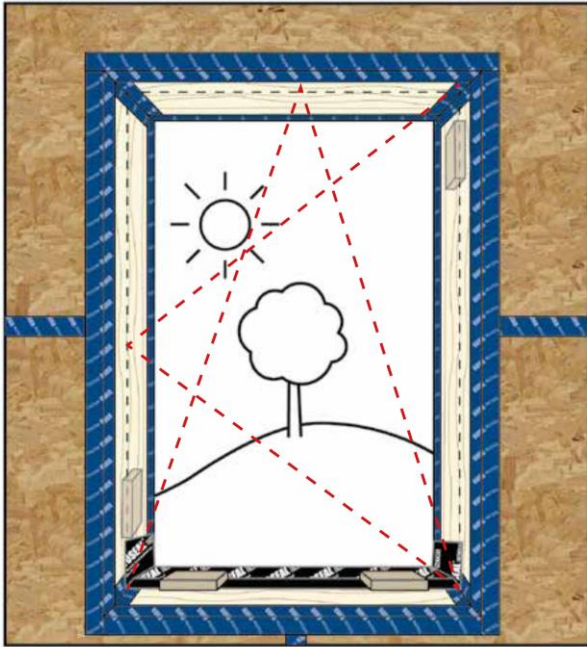


1. Make sure the wooden frame opening is always 1 to 1.5 inch bigger in width and height compared to finished window frame.
2. Tape and cover your wooden frame on top of the sill all the way around the frame and overlap like in the picture with a 6 or 8 inch flashing tape. We recommend to use a membrane from Resisto or similar supplier or even a Butyl flashing tape. https://www.resisto.ca/en/product/self-adhered-waterproofing-membrane-1885/?gclid=CjwKCAiA_vKeBhAdEiwAFb_nrf9Bi7zHpJAYxrGF3VUqOnIU5ASJXinSVsc5Xbg6l6zINtef3vNuYhoC1LQQAvD_BwE

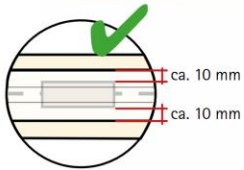
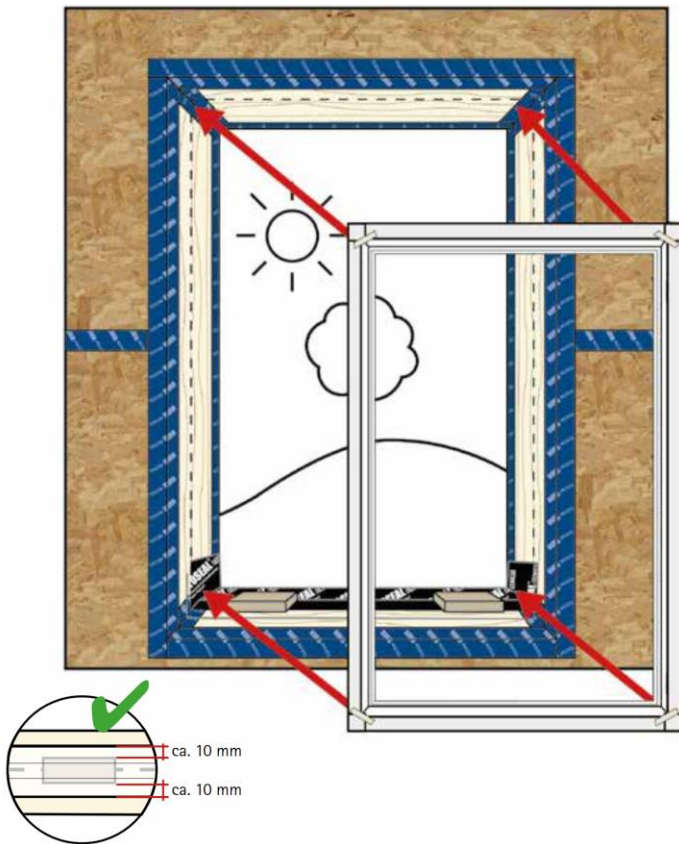


3. Use shims (wood or plastic) we recommend to use plastic shims. The shims are the distance holder for your windows and the help that the window weight is not destroying your membrane

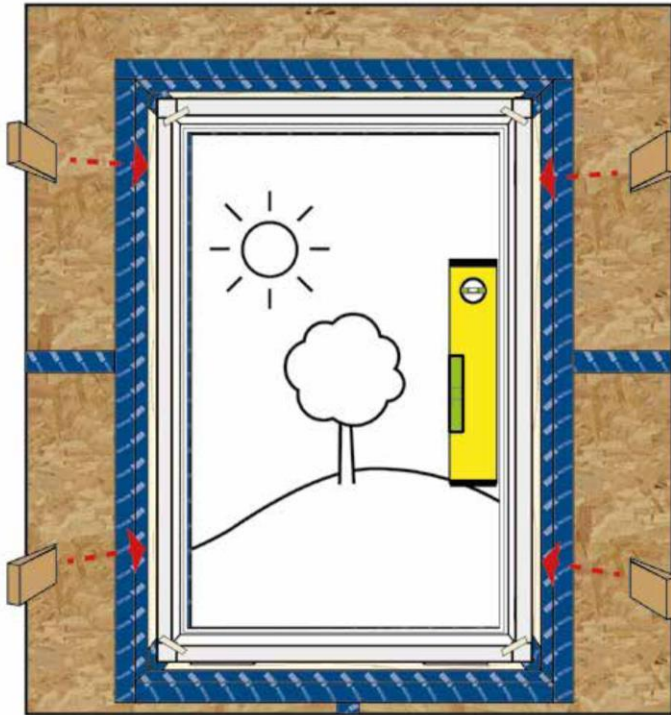


4.

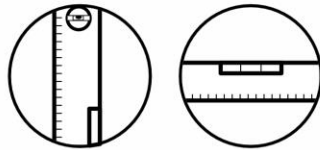
Installing the Window



Use the shims for the side distance and get the window level and plumbed. You could use small air bags to help getting the window proper installed.

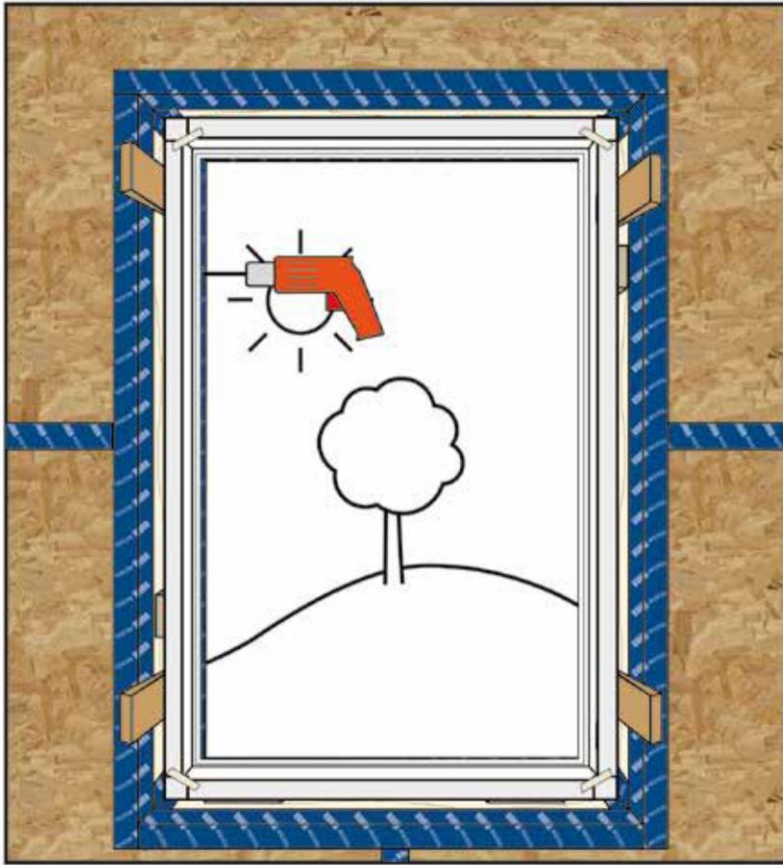


Fixierhilfen: Keile, Luftkissen o.ä.



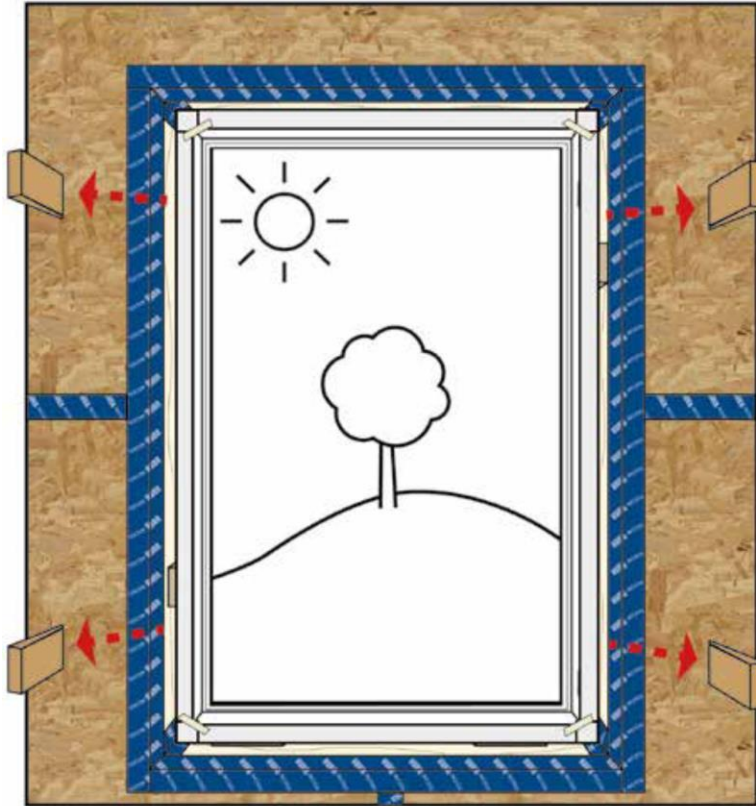
5.

Fixing the window in your wooden frame on each side, the top and bottom. You can use the braces coming with the windows or you could also drill through the frame inside and fix the frame with screw that way.



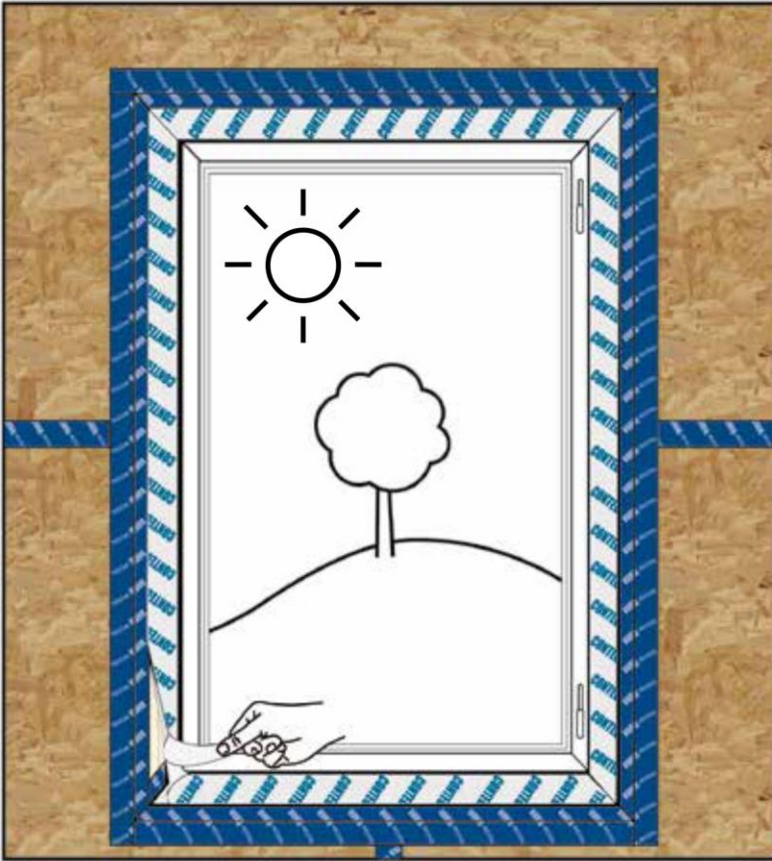
6.

Remove the shims you used to fix the sides and sprayfoam the gap between woodenframe and window all the way around in order to give the window more stability and in order to fill the gap for efficiency.



7.

Caulk with silicone from outside of the window the gap all the way around and then use a 4 or better 6 inch flashing tape in order to cover around 1.5 to 2 inch of the window frame and the remainder of the width need be taped on the plywood or OSB like in the picture below. We strongly recommend to use 3M 8067 all weather flashing tape https://www.3mcanada.ca/3M/en_CA/p/d/v000091377/



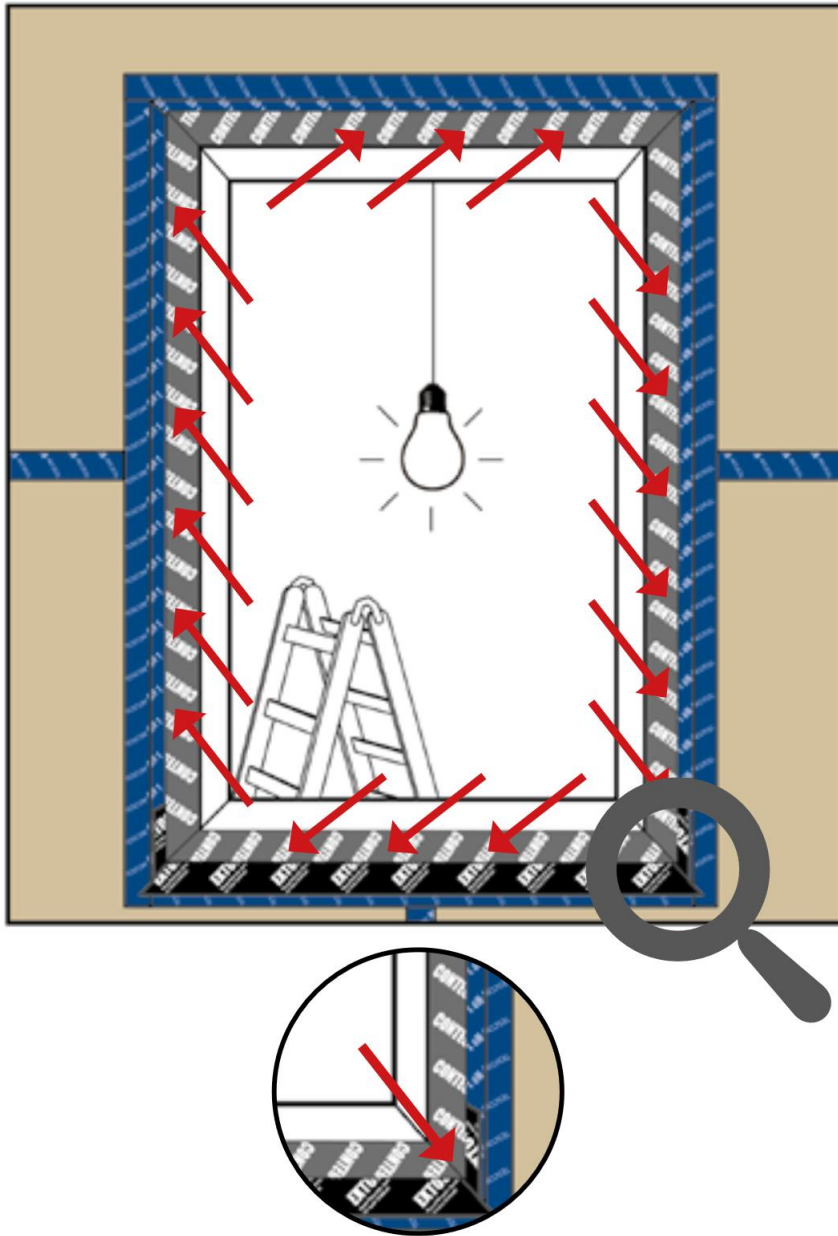
Trennfolie abziehen



8. Please check if the taping is proper installed and everything is sealed.

Tape your Housewrap onto the window flashing tape.

Done!



Please make sure that when you apply later your picture framed trim to the installed window that there is a small grade on the bottom (sill) in order to make sure water can flow away.